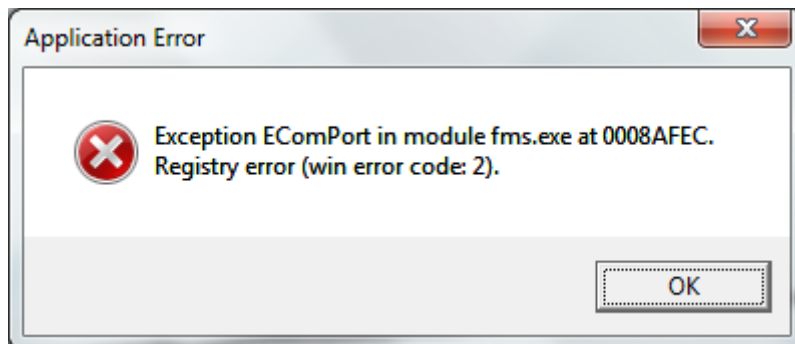


## FMS Flight Simulator Instructions for Windows Vista and Windows 7 Users

### Notes for owners of new computers without COM ports

The FMS Flight Simulator was designed to run with a COM port. Many newer computers today have replaced the COM port with USB ports. So you may experience the following error message:



To alleviate this problem you will need to download and install a COM port emulator. There are a number available online; the following is a link to one as an example:

<http://www.eterlogic.com/downloads/SetupVSPE.zip>

(If the link does not work, try copying the URL into a new browser window address bar)

Please note that we do not take any responsibility for the installation and setup of the COM port emulator. If you are unsure please consult a competent computer user for assistance.

Once installed and configured the USB port that the transmitter is connected to will operate the same way as the traditional COM port.

### FMS Installation Additional Steps for Windows Vista and Windows 7

The FMS Flight Simulator will work on Windows Vista and Windows 7 computers by following these steps:

1. After installing FMS on your Windows Vista or Windows 7 computer you may receive the following error message:



2. Download the D3DRM.DLL file from the following link:

<http://www.egomodels.com.au/resources/d3drm.dll>

3. Copy the D3DRM.DLL file into directory where FMS was installed, e.g. C:\Program Files\FMS.
4. Restart FMS and configure as per the instructions.